

Barrington Solar Energy Workshop

October 1, 2014

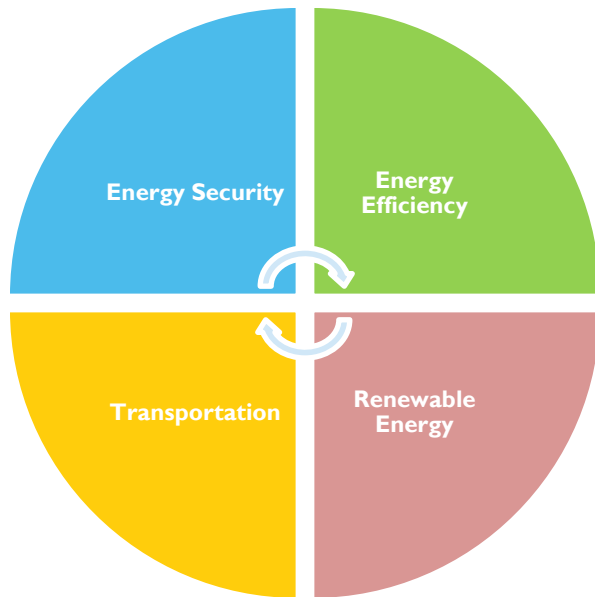


STATE OF RHODE ISLAND

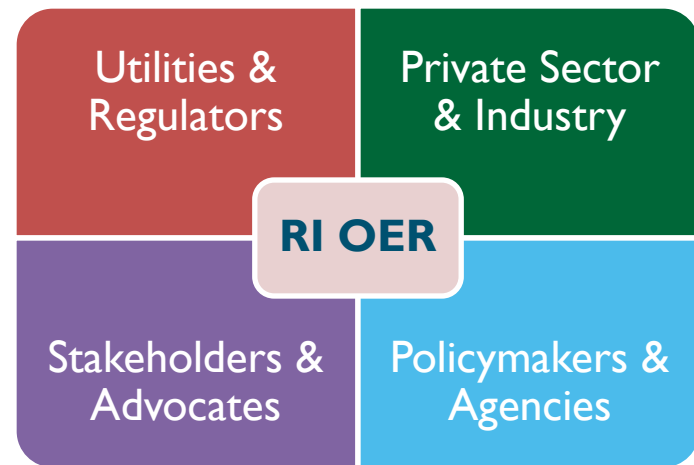
**OFFICE OF
ENERGY RESOURCES**

RI Office of Energy Resources (OER) Overview

“Leading Rhode Island to a secure, cost-effective,
and sustainable energy future.”

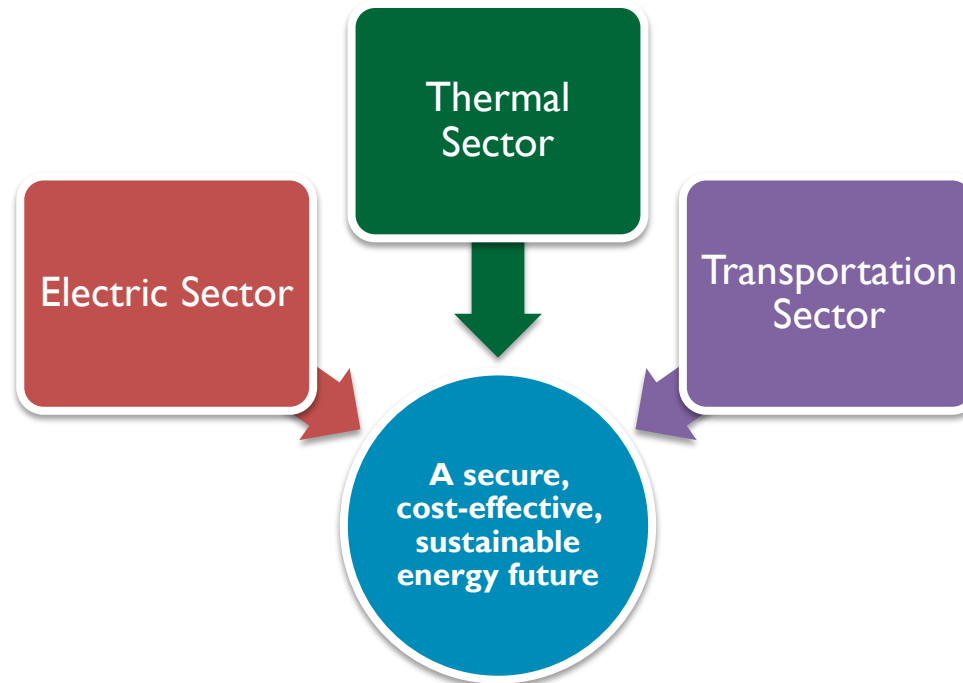


*The OER is the lead state agency on
energy policy and programs*



*OER works closely with diverse partners
to advance Rhode Island as a national
leader in the clean energy economy*

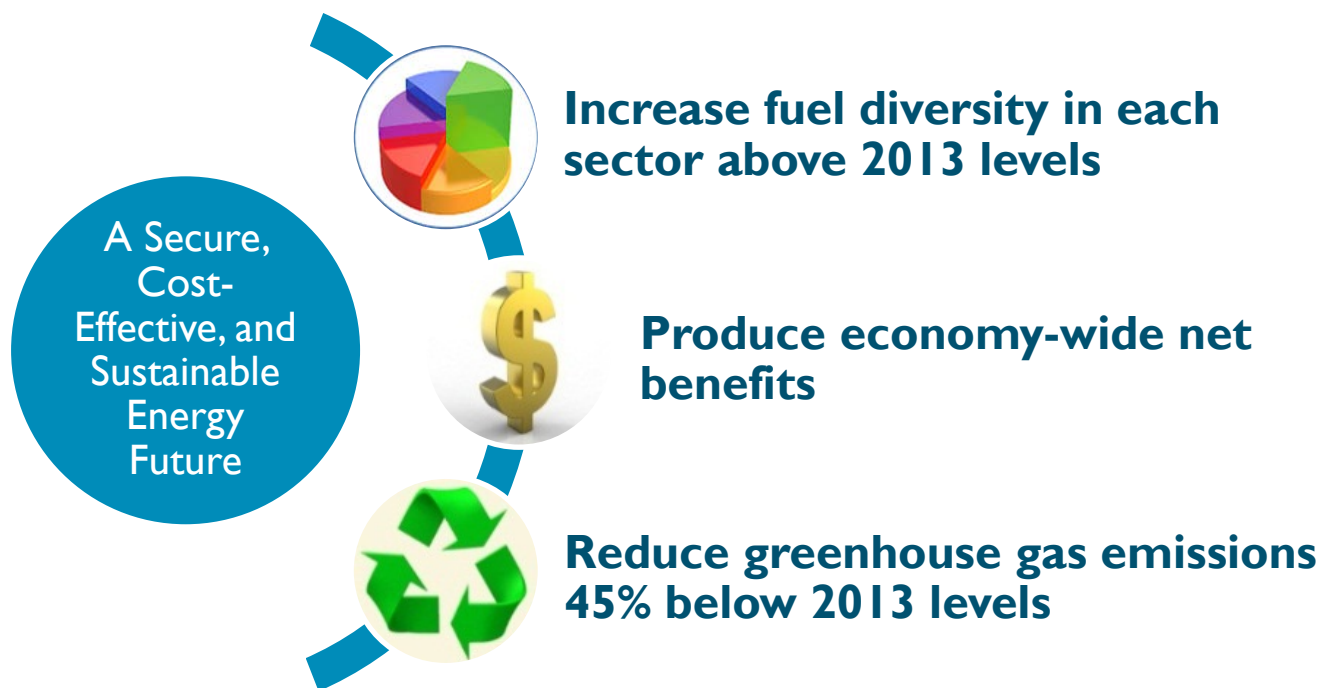
RI State Energy Plan



“In 2035, Rhode Island provides energy services across all sectors—**electricity, thermal, and transportation**—using a **secure, cost-effective, and sustainable** energy system.”

RISEP Targets

- Scenario modeling shows Rhode Island can:



OER's functions

- **Core functions include:**
 - Develop, administer, and monitor programs designed to promote energy efficiency, renewable energy, alternative fuels, and energy security.
 - Deliver technical assistance and funding residents, businesses, and the public sector.
 - Provide policy expertise and support for strategic energy planning, energy security, and workforce development.
 - Leverage, coordinate, and align inter-agency, public-private, regional, and federal efforts around energy systems

Before Pursuing a Renewable Energy Project.....



STATE OF RHODE ISLAND

**OFFICE OF
ENERGY RESOURCES**

Take Advantage of the State's Energy Efficiency Programs!

- Free home energy audits – through RISE
- Rebates for attic insulation, lighting, energy star refrigeration and air conditioners, etc.
- For further information about the free home energy audit and available rebates/incentives, please visit RI National Grid website:
<https://www1.nationalgridus.com/EnergyEfficiencyServices>

Net-Metering Program



STATE OF RHODE ISLAND

**OFFICE OF
ENERGY RESOURCES**

Net-Metering

- **Allows homeowners to install renewable energy system meeting their property's electrical demands.**
- **Homes can produce up to 125% of total energy load**
 - The excess electricity is credited to future billing months
- **The Net Metering program allows you take advantage of RI's Renewable Energy Fund and the federal 30% solar tax credit.**

Renewable Energy Growth (REG) Program



STATE OF RHODE ISLAND

**OFFICE OF
ENERGY RESOURCES**

What is the REG Program?

- Passed by General Assembly and signed by Governor Chafee in July 2014.
- Will have incentive payments spread over a 15-20 year period for homeowners, businesses and municipalities.
- 200 megawatts (MW) available between 2015- 2019.
 - 25 MW available in 2015.
- 3 MW of the 2015 capacity will be allocated to small solar, including homes.
 - 125-150 homes to participate in 2015.
- May 2015: Estimated Launch date of program, pending PUC approvals.

Property Assessed Clean Energy (PACE)



STATE OF RHODE ISLAND

**OFFICE OF
ENERGY RESOURCES**

What is PACE?

- Program to be available in early 2015
- PACE is a special assessment, commonly referred to as a PACE Assessment.
 - Benefit tied directly to a specific property
- When property ownership transfers, PACE assessment obligation stays with the property, not the property owner.
 - Similar to a property tax assessment

Key Program Benefits

- **Overcomes a major financial hurdle for making investments in EE and renewable energy.**
 - This is NOT a loan that follows you even if you no longer own the property...
- **Incremental special assessment payments are low and fixed for up to 20 years, with no up-front cost other than a small application fee.**
- **Investments in energy efficiency and renewable energy support the creation of local jobs.**
- **Potential to improve property values over time.**

Key Program Components

- **Municipalities have the option of participating in the PACE program.**
 - Each municipality must pass a resolution designating it as PACE municipality in order for residents to participate
- **Residents self-select => no requirements or costs to homeowners who do not wish to utilize PACE.**
- **Loan Loss Reserve Fund**
 - \$1,000,000 of ARRA funds obligated for a Loan Loss Reserve.
 - Reduces risk and lowers interest rate
- **OER is now drafting the rules & regulations**

Regional Greenhouse Gas Initiative (RGGI)



STATE OF RHODE ISLAND

**OFFICE OF
ENERGY RESOURCES**

What is RGGI?

- **First market-based “cap and trade” program to reduce greenhouse gas emissions**
- **Regional cap on CO₂ emissions from power sector**
- **Partnership among 9 Eastern states**
 - RI, CT, DE, NH, MA, NY, ME, MD, & VT
- **Auction proceeds support energy efficiency and renewable energy programs**

2014 RGGI Allocation Plan

- **Utility-managed efficiency programs (\$3.6 million)**
- **Municipal utility efficiency (\$.125 million)**
- **Electric vehicle/charging stations/renewables (\$.725 million)**
- **Municipal streetlight Efficiency (\$.525 million)**
- **Renewables at schools (\$1.3 million)**

Questions/Comments

Chris Kearns

christopher.kearns@energy.ri.gov

401-574-9113